

NOW PRE-LEASING WITH OWNERSHIP OPPORTUNITY - OCCUPANCY Q4 2012

2 JOURNEY MEDICAL PLAZA

A 25,000 Rentable SF Medical Office Building (Divisible to 1,500 SF) at the Most Prominent Corner in Aliso Viejo with Views

40%
PRE-LEASED &
CONSTRUCTION
STARTED!

TURN-KEY TI and PARTNERSHIP OPPORTUNITY AVAILABLE FOR LIMITED TIME*

*For the next 25% of the building leases signed by approximately Q1 2012.



PROPERTY FEATURES:

- New State-of-the-Art **LPA** Designed Building
- Elevated Building Design with Expansive Views of Aliso Viejo
- High Image Lobby with 2 Elevators
- Covered Parking for Physicians
- **Turn Key Tenant Improvements (Building Standard Medical Office Build-Out)**
- **Opportunity for Aliso Viejo's 1st State of the Art Multi-Specialty Surgical Center**
- Monument and Building Top Signage Available
- 5:1,000 Parking Ratio
- Highly Visible Location - Walking Distance to the Town Center Shops and Restaurants
- Another Quality Medical Office Development By **LACS DEVELOPMENT GROUP INC.**

EXCLUSIVELY LISTED BY:

For more information, visit:
www.2JourneyMedical.com

Lee & Associates - Irvine, Inc.
111 Pacifica, Suite 310
Irvine, California 92618
www.lee-associates.com

ALLEN BASSO
Senior Vice President
License ID# 01298152
949.790.3130
abasso@lee-associates.com

KURT BRUGGEMAN
Senior Vice President
License ID# 01264501
949.790.3125
kbruggeman@lee-associates.com

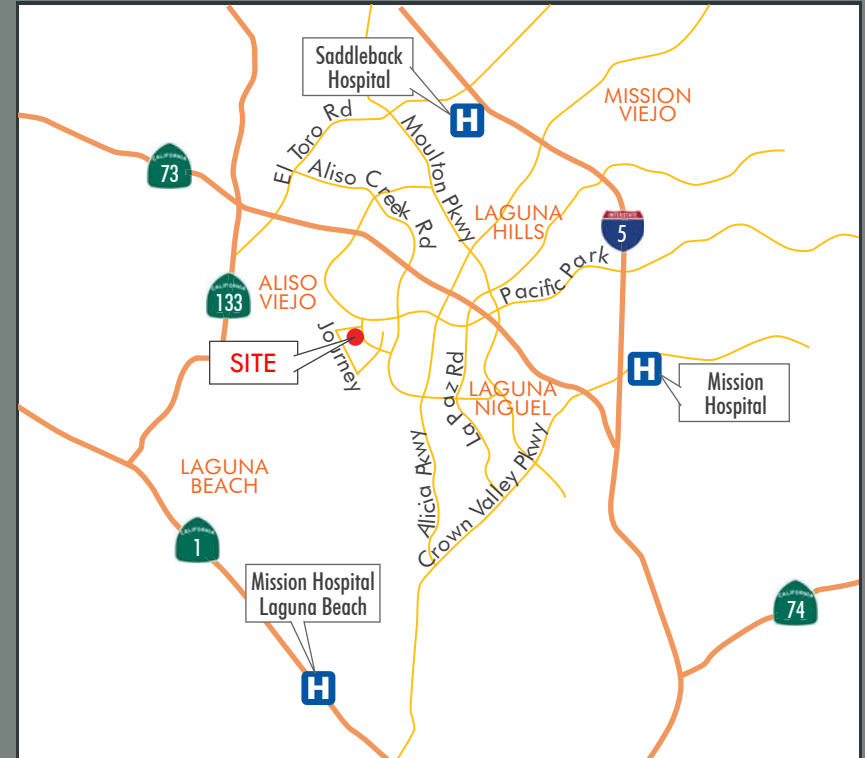
Lee & Associates®
COMMERCIAL REAL ESTATE SERVICES

*No warranty or representation is made to the accuracy of the foregoing information. Terms of sale or lease and availability are subject to change or withdrawal without notice. Numbers are subject to change - each investor should perform its own due diligence.

NOW PRE-LEASING WITH OWNERSHIP OPPORTUNITY - OCCUPANCY Q4 2012

2 JOURNEY MEDICAL PLAZA

A 25,000 Rentable SF Medical Office Building (Divisible to 1,500 SF) at the Most Prominent Corner in Aliso Viejo with Views



- DISTANCES:**
- > Adjacent to Public Library and National Gym
 - > Walking Distance to Aliso Viejo Town Center & Retail Amenities
 - > 3.9 Miles to Saddleback Hospital, Laguna Hills
 - > 5.3 Miles to Mission Hospital, Mission Viejo
 - > 7.9 Miles to Mission Hospital, Laguna Beach

EXCLUSIVELY LISTED BY:

For more information, visit:
www.2JourneyMedical.com

Lee & Associates - Irvine, Inc.
111 Pacifica, Suite 310
Irvine, California 92618
www.lee-associates.com

ALLEN BASSO
Senior Vice President
License ID# 01298152
949.790.3130
abasso@lee-associates.com

KURT BRUGGEMAN
Senior Vice President
License ID# 01264501
949.790.3125
kbruggeman@lee-associates.com

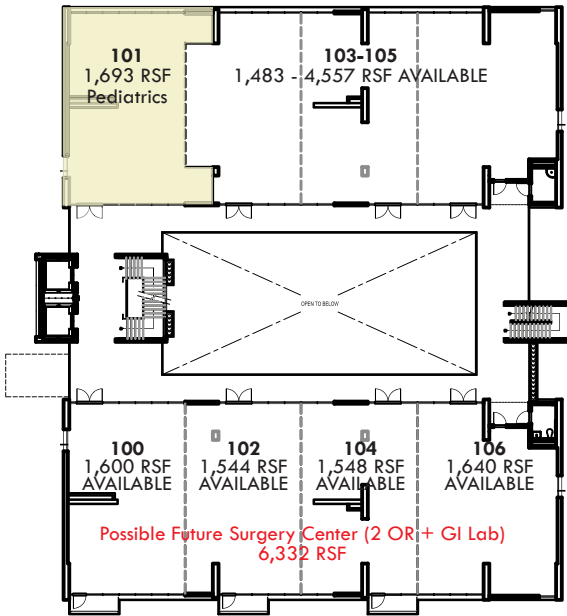
Lee & Associates®
COMMERCIAL REAL ESTATE SERVICES

NOW PRE-LEASING WITH OWNERSHIP OPPORTUNITY - OCCUPANCY Q4 2012

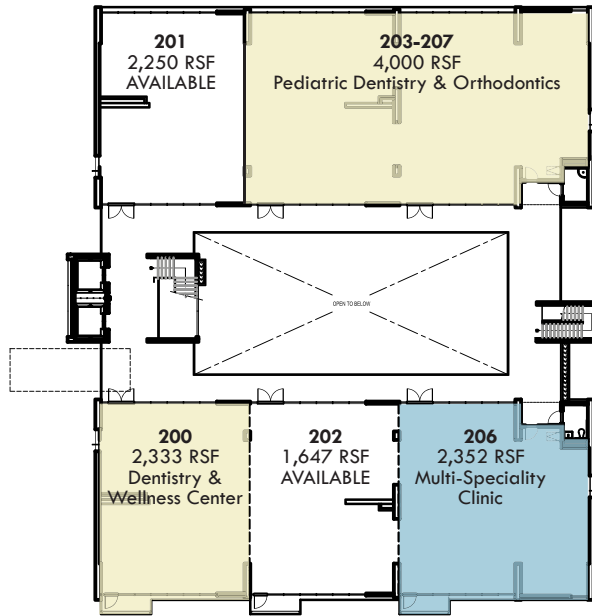
2 JOURNEY MEDICAL PLAZA

A 25,000 Rentable SF Medical Office Building (Divisible to 1,500 SF) at the Most Prominent Corner in Aliso Viejo with Views

First Level Floor Plan



Second Level Floor Plan



- Leased
- Lease Pending

Sample floor plans for all applications are available upon request.

Site and Ground Floor Plan



EXCLUSIVELY LISTED BY:

Lee & Associates - Irvine, Inc.
111 Pacifica, Suite 310
Irvine, California 92618
www.lee-associates.com

ALLEN BASSO
Senior Vice President
License ID# 01298152
949.790.3130
abasso@lee-associates.com

KURT BRUGGEMAN
Senior Vice President
License ID# 01264501
949.790.3125
kbruggeman@lee-associates.com

For more information, visit:
www.2JourneyMedical.com

*No warranty or representation is made to the accuracy of the foregoing information. Terms of sale or lease and availability are subject to change or withdrawal without notice. Numbers are subject to change - each investor should perform its own due diligence.

